

AD-01 DC Power Supply (optional)

**Scientech AB106 FM Modulator & Demodulator** is a compact, ready to use experiment board for FM Modulator & Demodulator. This board is useful for students to study and understand the functionality of Reactance modulator and Foster Seeley/ Ratio detector.

Scientech Analog Electronics Experiment Boards are designed as a comprehensive Modular solution for beginners to explore the fundamentals of a variety of basic building blocks in Analog Electronics. The boards are very user friendly and support self learning through flexibility of making circuit connections. Schematic diagrams on the boards provide easy understating of the concepts. Test points are provided to observe the waveforms/ signals and to measure voltages at different nodes. The boards can be used as standalone unit with external DC Power Supply, and Function Generator or can be used with Scientech Analog Labs; Scientech 2612/ Scientech 2612A / Scientech 2613. These labs have built in DC Power Supply, AC Power Supply, Function Generator, Modulation Generator, Continuity Tester, Toggle Switches, and Potentiometers. Product Tutorial with theory, description, explanation, procedure, references and results is available online on [www.ScientechLearning.com](http://www.ScientechLearning.com) .

## Features

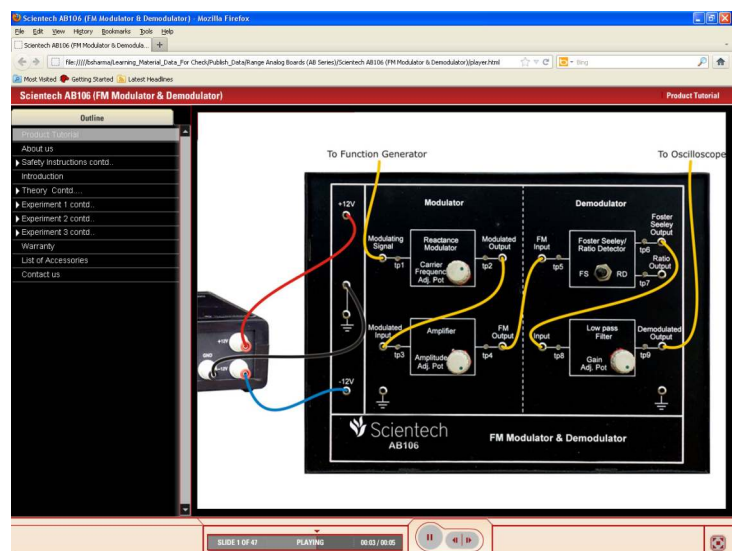
- On board test points to observe signals
- On board schematic diagram
- Flexibility of making circuit connections
- Light weight & compact
- Online Product Tutorial

## Scope of Learning

- Study of frequency modulation using Reactance modulator
- Study the operation of Foster seeley detector
- Study the operation of Radio detector

## Optional

- AD-01 DC Power Supply ( $\pm 12V$ ,  $\pm 5V$ )
- Simtel Analog Electronics Software



Online Product Tutorial