



AD-01 DC Power Supply (optional)

Sciencetech AB93 Optical Transducer is a compact, ready to use experiment board for Optical Transducer (Photo Transistor). This board is useful for students to study and understand the operation of Photo transistor as an optical transducer and to plot the characteristics of it.

Sciencetech Analog Electronics Experiment Boards are designed as a comprehensive Modular solution for beginners to explore the fundamentals of a variety of basic building blocks in Analog Electronics. The boards are very user friendly and support self learning through flexibility of making circuit connections. Schematic diagrams on the boards provide easy understating of the concepts. Test points are provided to observe the waveforms/ signals and to measure voltages at different nodes. The boards can be used as standalone unit with external DC Power Supply, or can be used with Sciencetech Analog Labs; Sciencetech 2612/ Sciencetech 2612A / Sciencetech 2613. These labs have built in DC Power Supply, AC Power Supply, Function Generator, Modulation Generator, Continuity Tester, Toggle Switches, and Potentiometers. Product Tutorial with theory, description, explanation, procedure, references and results is available online on www.SciencetechLearning.com.

Features

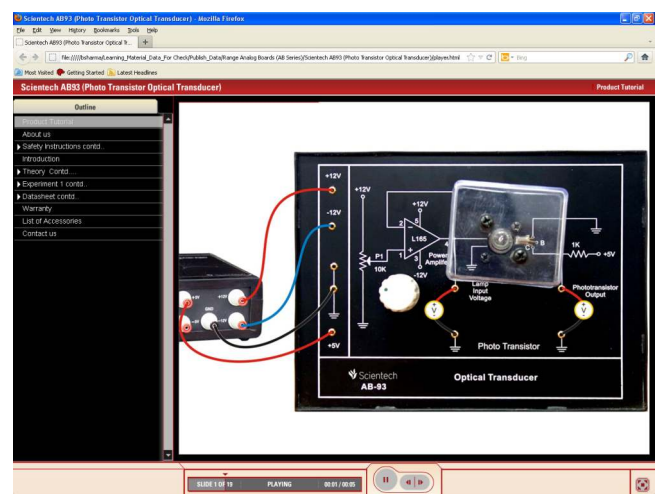
- On board test points to observe signals
- On board schematic diagram
- Flexibility of making circuit connections
- Light weight & compact
- Online Product Tutorial

Scope of Learning

- Study of the characteristics of Photo transistor

Optional

- AD-01 DC Power Supply ($\pm 12V$, $\pm 5V$)
- Simtel Analog Electronics Software



Online Product Tutorial